

Farm Retirement AUCTION

LOCATION:
12469 45th St NE, Petersburg, ND 58272



THURSDAY, APRIL 18 | 10AM 2019

DIRECTIONS: From Hwy 2 & ND 32, 3 miles north on ND 32, west 3 miles on 26th Ave NE, north 1 mile on Co 14. From Petersburg, 4 miles north on Co 5, 2-1/2 miles east on 45th St NE

AUCTIONEER'S NOTE: Major equipment begins selling at 10:00 AM. Live online bidding available on major equipment. Registration, terms, & details at SteffesGroup.com.

TRACTORS

1997 John Deere 9400, 4WD, 12 spd., 4 hyd., diff lock, integrated auto steer, Field Office, Field Cruise, inside suitcase weights, full weight pkg., 520/85R42 factory triple tires, 8,043 hrs., S/NRW94005001113

1997 John Deere 9300, 4WD, 24 spd., 4 hyd., return flow, power beyond, integrated auto steer, Field Office, Field Cruise, air seeder pin hookup, mid-suitcase weights, rear weights, 710/70R38 metric duals at 65%, shows 8,521 hrs., S/NRW9300H001376

1983 John Deere 750, 4WD, diesel, 3 pt., live 540 PTO, buggy top, John Deere 67 hyd. loader, Turf tires, 1,066 hrs.

1995 John Deere 8300, MFWD, deluxe cab, Field Office, powershift, 4 hyd., return flow, 3 pt. quick hitch, 1000 PTO, diff lock, integrated auto steer, air seeder hookup, 9-pin, (19) front suitcase weights, rear weights, fenders, 380/85R34 front tires, 380/90R50 press steel duals at 70%, 8,846 hrs., S/NRW8300P003978

1982 John Deere 4440, 2WD, quad range, 2 hyd., 3 pt., quick hitch, 540/1000 PTO, diff lock, 14.9-46 inside rear tires w/10-bolt hubs, no duals, tach replaced, 6,500 hrs., S/N60081

GPS EQUIPMENT

John Deere Starfire 3000 globe, SF1 active, S/NPCGT3TA677448

John Deere ITC globe, SF1 active, S/NPCGT01C545726
(2) John Deere 2600 displays SF1, 2,052 hrs., S/NPCGU26E142915, 2,918 hrs., S/NPCGU26H198540

COMBINE

2006 John Deere 9760, STS, RWD, Contour-Master, deluxe controls, variable spd. feeder

COMBINE

house, TouchSet, Y&M w/brown box display, fine cut chopper, bullet rotor, factory hopper ext., 22-1/2' high cap. unloading auger, HID lights, 800/70R38 single tires, 600/65R28 rear tires, 2,773 sep. hrs., 4,110 engine hrs., S/NH097605715992

HEAD & HEADER TRAILER

2005 John Deere 635 flex head, 35', low dam, fore/aft, poly, 60/70 Series drive, CWS wind bar, extra fine cut sickle, S/N711665

Duo Lift Head Hauler DLT tandem axle header trailer, 37', torsion axle, light pkg.

GRAIN CART

1995 J&M grain cart, 525 bu., 1000 PTO, corner auger, roll tarp, light pkg., 23.1-26 tires, S/N3390

AIR SEEDER & PLANTER

2015 John Deere 1890 air seeder, 42-1/2', 7" & 15" spacing, full run monitor, 1910 JD 350 bu. tow-behind commodity cart, 200 bu. & 150 bu. compartments, variable rate control, remote control belted hyd. fill conveyor, (2) green rollers, yellow fine seed, extended wear boots, full HID light pkg., 16.5-16 tires on walking tandems, 710/70R38 rear tires, approx. 7,500 acres, single owner, Air Seeder S/N1A81890CCEF760141, Cart S/N1A81910HKEF760235

Blue roller for 1910 commodity cart
Yellow roller for 1910 commodity cart
Bonco strip seeder

2002 John Deere 1750 pull-type vacuum planter, 8x30", dry fertilizer, 3 bu. boxes, mechanical rate drive,

AIR SEEDER & PLANTER

HD down pressure springs, hyd. fold markers, light pkg., corn, soybeans, sunflowers, & edible beans discs

SPRAYERS

2012 Hardi Navigator 4000 pull-type sprayer, 100' boom, large 1000 PTO high pressure pump, 5500 auto rate controller, full hyd. triple nozzle, foam marker, chemical eductor, bottom fill, 1,200 gal. poly tank, rinse tank, adj. axle, 320/90R24 tires
Sprayer, 14' boom, 3 pt., 50 gal., electric pump
Kirschman spray coupe, 54', 130 gal. tank

CHEMICAL & FERTILIZER EQUIPMENT

John Blue pull-type liquid fertilizer cart, 400 gal. poly tank, piston pump & hyd. pump
Computaire granular applicator, 45' run, electric drive, (2) controllers
(3) Transfer pumps, 5-1/2 hp., 3-1/2 hp.

TILLAGE EQUIPMENT

2013 Summers Super Coultter Plus, 30', 8 wave disc, tandem duals across, light pkg., weight pkg., Summers 4-bar HD harrow, S/NN0285

2004 Mandako land roller, 45', 42" drum, light pkg., S/NC06-04-4567

2004 John Deere 2410 chisel plow, 41', 12" spacing, full floating hitch, tandems across, AccuDepth, Summers 3-bar HD harrow

John Deere 680 chisel plow, 45', tandems across, single pt., Herman 4-bar harrow
John Deere 960 field cultivator, 36-1/2', walking tandems across, single pt. depth, Herman 3-bar harrow

2003 Summers HD harrow, 60', 9/16 harrow, hyd. down pressure, adj. sections, 5-bar

ROW CROP EQUIPMENT

John Deere 825 cultivator, 8x30", 3 pt., spring shank, Dakon tunnel shields, gauge wheels
HNS cultivator, 8x30", 3 pt., coil shank, tunnel shield
Nisson rod weeder, 8x30", 3 pt., hyd. drive

BEAN EQUIPMENT

1997 Universal bean head, 22', perforated bottom, w/22' Sund pickup, John Deere single pt.
Harriston edible bean knife, 8x30", mid-mount

TRUCKS

1990 Mack CH600 twin screw, 300 Mack, 9 spd. Maxitorque, rear controls, twin aluminum fuel tanks, 20'x63"x8-1/2' wide Loadline box & hoist, roll tarp, 3 pc. end gate, 11-22.5 tires on steel rims, shows 762,128 miles
1974 IHC Fleetstar 1910 twin screw, 446 gas, 5&3 spd., 19' Reiten aluminum box & hoist, roll tarp, 3 pc. end gate, plumbed for drill fill, 11.00-20 rear tires, 85,520 actual miles, single owner

1969 IHC BC-182 tag tandem, 345 Gopher rebuilt, 5&2 spd., 18' wood box & hoist, Westfield 16" drill fill, 8.25-20 tires,
1954 IHC R-160 single axle, 6 cyl., 4&2 spd., 14' wood box & hoist, 1,500 gal. poly tank

GRAIN HANDLING EQUIPMENT

2007 Brandt 5000 EX grain vac, 1000 PTO, cleanup pkg., hyd. fold discharge, S/N77218
2009 Brandt 1390 mechanical swing hopper auger, 90x13", low pro hopper, 540 PTO
Hutchinson auger, 61x8", PTO, hyd. lift
Westfield J208 auger, 41x8", 7-1/2 hp., 1 phase, reversible motor
Westfield drill fill brush auger
Westgo auger, 35x7", 5 hp., 1 phase, set up for treater
Snowco rotary screen electric motor

ROCK PICKERS

Summers 400 rotary rock picker, 3-bat, hyd. drive
Degelman rock rake, 14', 540 PTO
Degelman rock nabber, 3 pt.
Rock picker, crown fork style

BLADES & SCRAPER

Koontz hyd. blade, 10', 3 pt., 3-way
Walden blade frame w/8' blade
Ashland dump scraper, hyd., 2-1/2 yd.

MOWERS & SNOWBLOWER

Woods BB72 mower, 3 pt., 540 PTO, solid rubber tires
John Deere 111 trailing mower, 7' sickle
John Deere 272 grooming mower, 3 pt.
John Deere 112 lawn tractor, mower deck, tiller, variable spd.
Alloway SB96 snowblower, 8', 3 pt., hyd. spout control, 540 PTO

OTHER EQUIPMENT

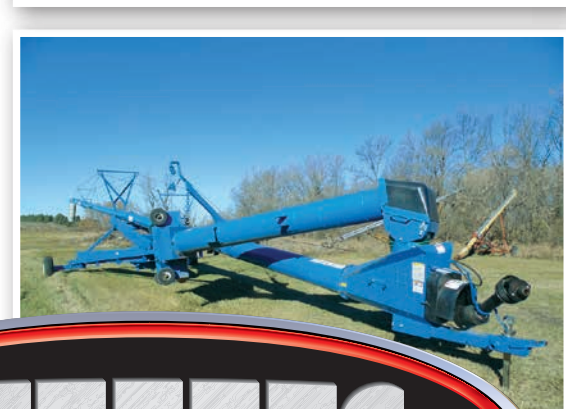
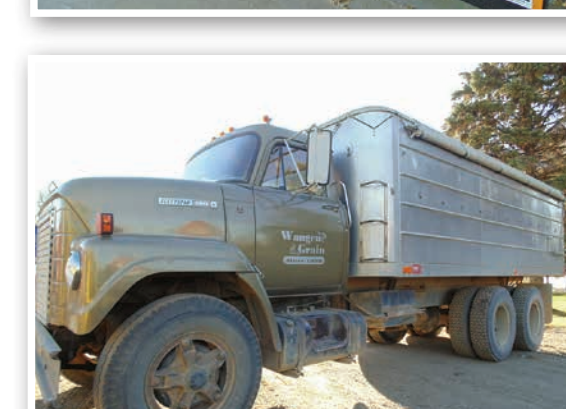
(2) 4-wheel running gears
Pull-A-Long tile pipe layer
Amco rotary ditcher, 3 pt., 540 PTO

RECREATION

Honda Trail 90 motorcycle, shows 4,131 miles, No Title
Honda Elsinore 250 dirt bike
Honda ATC90 3-wheeler, No Title
Ski Doo Super Olympic snowmobile, complete
Arctic Cat Pantera body & track, No motor

PARTS & MISCELLANEOUS

64 gal. service tank, 12v pump
Set of 18.4-38 hub duals
(4) 265/75R18 tires
Flexi-Coil air seeder parts, manifolds, hoses, etc.
Adapter for Case-IH heads
Flat fenders for 4010
Post hole auger, 2 pt.



SteffesGroup.com

Steffes Group, Inc., 2000 Main Avenue East, West Fargo, ND 58078 | 701.237.9173

RODNEY & MILLIE GILDERHUS | 701.740.7049

or Brad Olstad at Steffes Group, 701.237.9173 or 701.238.0240



Scott Steffes ND81, Brad Olstad ND319, Bob Steffes ND82, Max Steffes ND999, Justin Ruth ND2019, Ashley Huhn ND843, Eric Gabrielson ND890, Randy Kath ND894, Scott Gillespie ND1070, Shelly Weinzettl ND963



TERMS: All items sold as is where is. Payment of cash or check must be made sale day before removal of items. Statements made auction day take precedence over all advertising. \$35 documentation fee applies to all titled vehicles. Titles will be mailed. Canadian buyers need a bank letter of credit to facilitate border transfer.